



NOTES:
 1. SETTING OUT COORDINATES REFER DRG. No. 60095653/NP/1601.
 2. THE CONTRACTOR SHALL KEEP OPEN AND PROVIDE ACCESS (PEDESTRIAN AND TRAFFIC) TO THE PUBLIC AT ALL TIMES DURING THE PERIOD OF THE CONTRACTOR'S OCCUPATION OF DIL STREET. THE CONTRACTOR SHALL MAINTAIN THIS PORTION OF SITE IN A CLEAN, PASSABLE AND SAFE STATE AT ALL TIMES.
 3. THIS DRAWING SHALL BE READ IN CONJUNCTION WITH DRG. No. 60095653/NP/1652.

LEGEND:

[Dotted pattern]	PORTION NPR1	[Cross-hatch pattern]	PORTION NPR54
[Diagonal lines /]	PORTION NPR1A	[Diagonal lines \]	PORTION NPR55
[Horizontal lines]	PORTION NPR2	[Vertical lines]	PORTION NPR56
[Vertical lines]	PORTION NPR3	[Wavy pattern]	PORTION NPR5C
[Diagonal lines /]	PORTION NPR4	[Wavy pattern]	PORTION NPR5D
[Dotted pattern]	PORTION NPR5	[Wavy pattern]	PORTION NPR5E

B	WORKING DRAWING	REV	DEC 09
A	TENDER ADDENDUM NO. 1	RC	OCT 09
-	TENDER DRAWING	RC	SEP 09

Highways Department 路政署
 Major Works Project Management Office

CENTRAL - WAN CHAI BYPASS AND IEC LINK
 CENTRAL - WAN CHAI BYPASS - NORTH POINT RECLAMATION

PORTION OF SITE
 SHEET 1 OF 2

AECOM

DRGNO. 圖紙編號	60095653/NP/1651B
DESIGNED BY	TTF
CHECKED BY	H1/2009/11
DATE	AT 17 1000
SCALE	AS SHOWN
WORKING DRAWING	
COPYRIGHT RESERVED	



INSET 'A'
SCALE 1:1000

CENTRAL DISTRICT



EIA-141/2007
DP3

HKCEC (Western Part)

HKCEC (Middle Part)

HKCEC (Eastern Part)

INT	COORDINATES	
	EASTING	NORTHING
C41	835986.526	816105.708
C42	835979.417	816104.468
C43	835963.943	816079.706
C44	835963.543	816086.581
C45	835964.818	816085.528
C46	835965.504	816085.514
C46	835955.757	815981.208
C47	835954.956	815982.441
C48	835950.846	815975.887
C49	835951.347	815973.238
C50	835950.828	815966.814
C51	835948.478	815989.846
C52	835975.226	816009.224
C53	835971.504	816077.897
C54	835973.627	816064.764
C55	835973.745	816070.883
C56	835991.071	816078.764
C56-1	835995.679	816078.873
C56-2	835982.468	816078.765
C56-3	835987.248	816182.758
C57	835983.403	816181.878
C58	835978.496	816077.798
C59	835978.574	816081.818
C60	835978.507	816120.744
C61	835993.881	816184.524
C62	835923.434	816171.812
C63	835923.504	816280.748
C64	835923.818	816276.767

INT	COORDINATES	
	EASTING	NORTHING
C65	836028.933	815413.438
C66	836034.000	815413.614
C67	836022.816	815450.240
C68	836019.515	815453.882
C69	836023.110	815494.000
C70	836027.289	815471.880
C71	836041.050	815493.270
C72	836048.415	815407.187
C72-1	835555.589	815106.587
C73	836047.435	815385.890
C74	836049.797	815374.177
C75	836024.185	815323.148
C76	836038.298	815308.000
C77	836048.906	815302.898
C78	836048.439	815334.038
C79	836042.630	815351.015
C80	836024.635	815328.880
C81	836028.417	815309.182
C82	836028.882	815378.188
C83	836107.025	815326.084
C84	836098.473	815322.444
C85	836092.342	815348.714
C86	836084.499	815348.925
C87	836084.196	815403.388
C88	836082.512	815424.142
C89	836078.987	815425.898
C90	836077.630	815437.198

CUT LINE B-B
SEE AT DRAWING NO. A00025/C1/100/1006



KEY PLAN
SCALE 1:10000

NOTE:
1. FOR NOTES & LEGEND, REFER TO DRAWING NO. A00025/C1/100/1006.

INT	COORDINATES	
	EASTING	NORTHING
C1	836875.205	816222.551
C2	836875.207	816222.559
C3	836874.561	816224.825
C4	836871.020	816251.014
C5	836882.492	816229.522
C6	836881.584	816218.612
C7	836886.585	816215.197
C8	836886.191	816207.147
C9	836886.433	816202.247
C10	836891.082	816207.050
C11	836885.389	816208.075
C12	836877.486	816208.107
C13	836923.468	816204.817
C14	836886.433	816217.122
C15	836874.285	816208.500
C16	836875.195	816205.525
C17	836878.138	816204.441
C18	836846.085	816208.816
C19	836871.421	816206.587
C20	836902.537	816220.881
C21	836915.295	816217.484
C22	836913.183	816214.445
C23	836827.086	816209.074
C24	836926.984	816221.670
C25	836915.288	816220.251
C26	836881.647	816212.286
C27	836904.025	816243.896
C28	836906.218	816244.445
C29	836901.523	816236.385
C30	836883.781	816208.487
C31	836837.216	816228.470
C32	836824.142	816225.117
C33	836821.081	816216.482
C34	836826.290	816224.700
C35	836827.428	816222.056
C36	836808.187	816218.280
C37	836824.812	816228.093
C38	836824.747	816228.285
C39	836828.850	816219.194
C40	836819.190	816228.037
C41	836828.810	816227.295
C42	836816.906	816229.088
C43	836825.682	816215.512

C	TENDER ADDENDUM NO.4	SWH/VL/SEP/08
B	TENDER ADDENDUM NO.2	SWH/VL/SEP/08
A	TENDER ADDENDUM NO.1	SWH/VL/SEP/08
-	TENDER DRAWING	SWH/VL/SEP/08
00	REVISION	SWH/VL/SEP/08

土木工程師學會
Civil Engineering and
Development Department

WAN CHAI DEVELOPMENT PHASE II

WAN CHAI DEVELOPMENT PHASE II -
CONTRACT NO. HK/2009/01 -
HONG KONG CONVENTION AND EXHIBITION CENTRE

SITE BOUNDARY
SETTING OUT PLAN
(Contract no. HK/2009/01)

AECOM

DRGNO.
圖號: 60041297/C1/100/1006C

SCALE	1:1000	DATE	08/2009/01	PROJECT	PM
DRAWN BY	EC	CHECKED BY	EC	DATE	08/2009/01
DATE	08/2009/01	SCALE	1:1000	PROJECT	PM
DATE	08/2009/01	SCALE	1:1000	PROJECT	PM

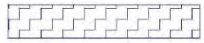
港口
HARBOUR



LEGEND:



WORKS AREA



DREDGING AREA FOR
MITIGATION OF ODOUR(DP3)



SITE BOUNDARY



中國建築工程(香港)有限公司
CHINA STATE CONSTRUCTION ENG'G. (HONG KONG) LTD.

Highways Department
CONTRACT NO. HY/2009/15
CENTRAL-WAN CHAI BYPASS - TUNNEL
(CAUSEWAY BAY TYPHOON
SHELTER SECTION)

TITLE
LOCATION PLAN OF WORKS AREA

DRG. NO.
CWBT/EPD/001B

SCALE
1:1000 @ A0
DATE
MAY 2010 08 11
MILLIMETERS
COPYRIGHT RESERVED

維多利亞公園
Victoria Park

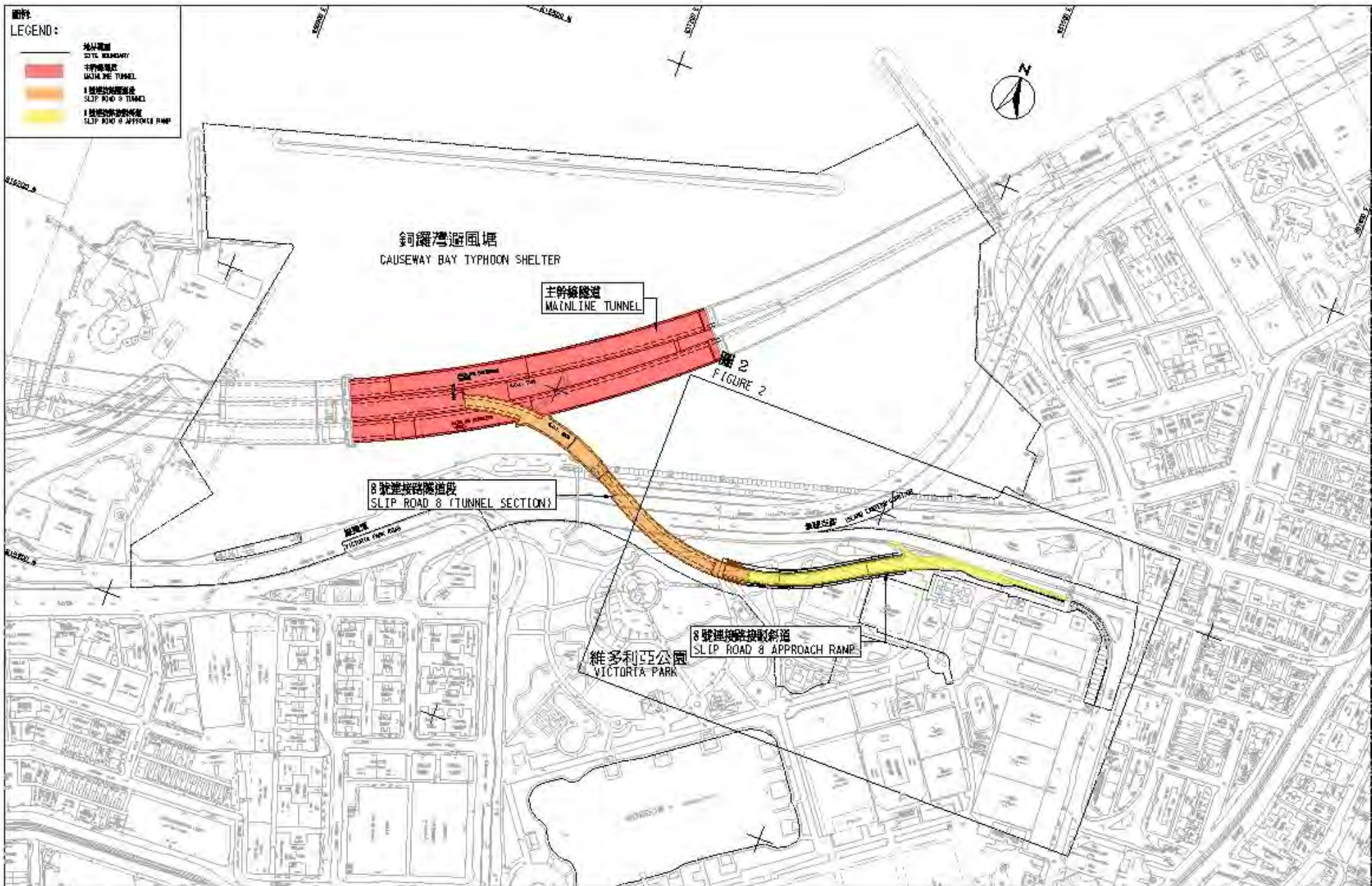


圖1- 合約編號 HY/2010/08 中環灣仔繞道-8號連接路段隧道

FIGURE 1 - CONTRACT NO. HY/2010/08 - CENTRAL - WAN CHAI BYPASS - TUNNEL (SLIP ROAD 8 SECTION)

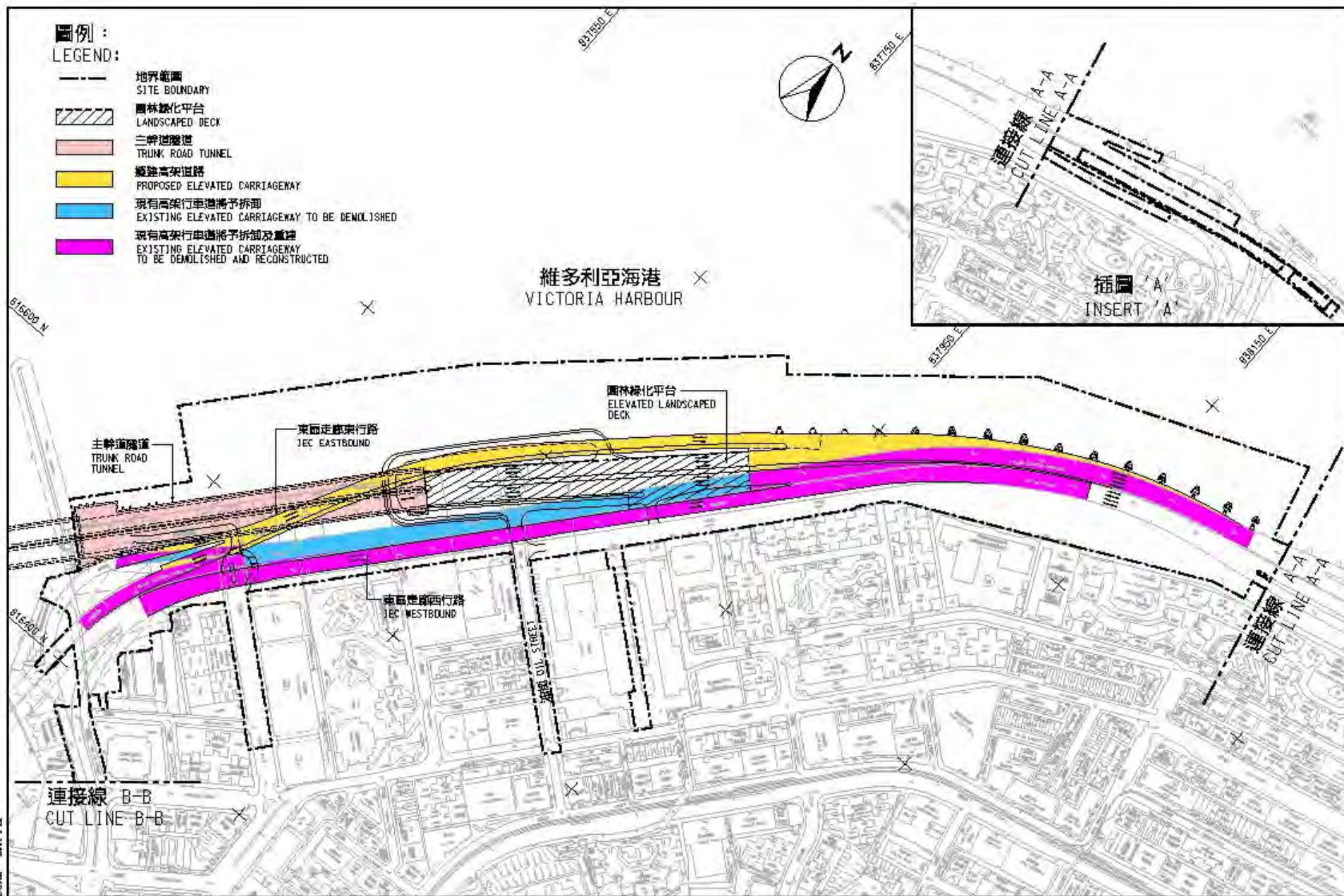
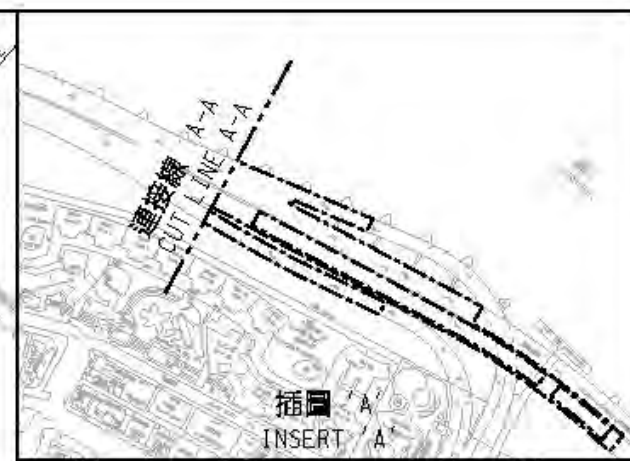
SCALE 1 : 3000

圖例：
LEGEND:

-  地界範圍
SITE BOUNDARY
-  園林綠化平台
LANDSCAPED DECK
-  主幹道隧道
TRUNK ROAD TUNNEL
-  擬議高架道路
PROPOSED ELEVATED CARRIAGEWAY
-  現有高架行車道將予拆卸
EXISTING ELEVATED CARRIAGEWAY TO BE DEMOLISHED
-  現有高架行車道將予拆卸及重建
EXISTING ELEVATED CARRIAGEWAY TO BE DEMOLISHED AND RECONSTRUCTED



維多利亞海港
VICTORIA HARBOUR



合約編號 HY/2009/19 - 中環灣仔繞道 - 北角段隧道及東區走廊連接路

CONTRACT NO. HY/2009/19 - CENTRAL-WAN CHAI BYPASS - TUNNEL (NORTH POINT SECTION) AND ISLAND EASTERN CORRIDOR LINK

SCALE 1 : 3000